

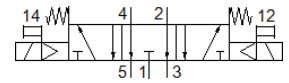
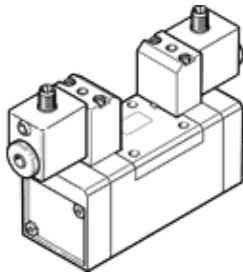
solenoid valve

MDH-5/3E-D-1-M12-C

Part number: 197126

FESTO

With M12 plug connection.



Data sheet

| Feature | Value |
|---------------------------------------|--|
| Valve function | 5/3 exhausted |
| Type of actuation | electrical |
| Width | 42 mm |
| Standard nominal flow rate | 1,200 l/min |
| Operating pressure | 3 ... 10 bar |
| Design structure | Piston slide |
| Type of reset | mechanical spring |
| Protection class | IP65 |
| Nominal size | 8 mm |
| Grid dimension | 43 mm |
| Exhaust-air function | throttleable |
| Sealing principle | soft |
| Assembly position | Any |
| Conforms to standard | ISO 5599-1 |
| Manual override | Pushing |
| ISO code | 157 |
| Type of piloting | Piloted |
| Pilot air supply | Internal |
| Flow direction | non reversible |
| Overlap | Positive overlap |
| Switching time off | 55 ms |
| Switching time on | 25 ms |
| Duty cycle | 100 % |
| Max. positive test pulse with logic 0 | 3,800 µs |
| Max. negative test pulse with logic 1 | 4,900 µs |
| Characteristic coil data | 24 V DC: 2.7 W |
| Permissible voltage fluctuation | +/- 10 % |
| Operating medium | Compressed air in accordance with ISO8573-1:2010 [7:4:4] |
| Note on operating and pilot medium | Lubricated operation possible (subsequently required for further operation) |
| Vibration resistance | Transport application test at severity level 1 in accordance with FN 942017-4 and EN 60068-2-6 |
| Shock resistance | Shock test with severity level 2 in accordance with FN 942017-5 and EN 60068-2-27 |
| Medium temperature | -10 ... 50 °C |
| Sound pressure level | 85 dB(A) |
| Ambient temperature | -10 ... 50 °C |
| Product weight | 580 g |
| Electrical connection | M12x1 |
| Mounting type | On sub-base with through hole |
| Pneumatic connection, port 1 | Connection plate size 1 as per ISO 5599-1 |
| Pneumatic connection, port 2 | Connection plate size 1 as per ISO 5599-1 |
| Pneumatic connection, port 3 | Connection plate size 1 as per ISO 5599-1 |

| Feature | Value |
|------------------------------|---|
| Pneumatic connection, port 4 | Connection plate size 1 as per ISO 5599-1 |
| Pneumatic connection, port 5 | Connection plate size 1 as per ISO 5599-1 |
| Material seals | HNBR NBR |
| Material housing | Aluminium die cast |